

Excellence in **Switchgear & Auto Components**  
for Over **40** Years



**BUILT** WITH  
**TRUST**  
**BACKED** BY  
**EXPERIENCE**



To View E-Catalogue  
Please Scan QR Code



[enquiry@bendyproducts.com](mailto:enquiry@bendyproducts.com)



[www.bendyproducts.com](http://www.bendyproducts.com)

# Index

## About Us

04-10

- **Our Mission & Vision** ..... 05
- **History** ..... 06-07
- **Certificates** ..... 08
- **Sales Milion** ..... 09
- **Customer Base Globally** ..... 10

## Manufacturing Facility

11-12

## Quality Facility

13-14

## Products

15-72

- **Sheet Metal (stamping)** ..... 15
  - Box Clamp ..... 16
  - Aluminium Stamping ..... 17
  - Brackets ..... 18
  - Brass Pins ..... 19
  - Copper Joint ..... 20
  - Deep Draw Fastners ..... 21
  - Left Right & Middle Terminal ..... 22
  - Low Voltage Stamping ..... 23
  - Push Rod Assy ..... 24
  - Side Panels ..... 25
  - Switchgear Stamping ..... 26
- **Precision Machining Components** ..... 27
  - Aluminium Rings ..... 28
  - Bearing Bkt ..... 29
  - Brass Cage ..... 30
  - Brass Fittings ..... 31
  - Brass Inserts ..... 32
  - Brass Rings ..... 33
  - Engine & Transmissions Parts ..... 34
  - Key Components ..... 35
  - Pivot Shaft ..... 36
  - Yoke & Clevis ..... 37
- **Copper Machining Components** ..... 38
  - Box Clamps ..... 39
  - Breaker Terminal ..... 40
  - Contact Terminals ..... 41
  - Copper Forged & Machined ..... 42
  - Copper Forging ..... 43
  - Industrial Battery Terminals Stalcop ..... 44
  - JVD 0082 ..... 45
  - MCCB Contacts ..... 46
  - Plated Bus Bars ..... 47
  - VCB & RMU Components ..... 48



## ■ Multi Formed Parts 49

|   |    |                              |    |
|---|----|------------------------------|----|
| ■ <u>Clamp &amp;Stainless-Steel<br/>Hose Clamps</u> | 50 | ■ <u>R Pins</u>              | 53 |
| ■ <u>Electrical Contacts</u>                        | 51 | ■ <u>Electrical Terminal</u> | 54 |
| ■ <u>Hose Clamps</u>                                | 52 |                              |    |

## ■ MCB Parts 55

|                             |    |                     |    |
|-----------------------------|----|---------------------|----|
| ■ <u>Arc Chute Assembly</u> | 56 | ■ <u>U Clamp</u>    | 60 |
| ■ <u>Arc Runner Contact</u> | 57 | ■ <u>Arc Runner</u> | 61 |
| ■ <u>Box Clamp</u>          | 58 |                     |    |
| ■ <u>Moving Contact</u>     | 59 |                     |    |

## ■ Hardware & Fastners 62

|                                  |    |  |    |
|----------------------------------|----|--|----|
| ■ <u>Box Clamp</u>               | 63 | ■ <u>Nut- 87530,Washers,<br/>Weld Nuts &amp; Head Nuts</u> | 65 |
| ■ <u>Clips &amp; Forged Pins</u> | 64 |  |    |

## ■ Electrical 66

|                                |    |
|--------------------------------|----|
| ■ <u>Lugs</u>                  | 67 |
| ■ <u>Mechanical Connectors</u> | 68 |

## ■ Industries Served 69

|                                   |   |
|-----------------------------------|---|
| ■ <u>Switchgear Manufactures</u>  | ■ <u>Energy Sector</u>                        |
| ■ <u>Transformer Manufactures</u> | ■ <u>Oil &amp; Gas Industry</u>               |
| ■ <u>EV Station</u>               | ■ <u>Aerospace &amp; Defense<br/>Industry</u> |
| ■ <u>Tractor Mfg</u>              |   |

## ■ Gallery 70

|                                    |   |
|------------------------------------|---|
| ■ <u>Moving Contact</u>            | ■ <u>Left Right &amp; Middle Terminal</u>     |
| ■ <u>Terminal</u>                  | ■ <u>Washers</u>                              |
| ■ <u>U Camp</u>                    | ■ <u>Low Voltage Stamping</u>                 |
| ■ <u>Box Clamp</u>                 | ■ <u>Side Panels</u>                          |
| ■ <u>Brass Pins</u>                | ■ <u>Switchgear Stamping</u>                  |
| ■ <u>Brackets</u>                  | ■ <u>MCCB Contacts</u>                        |
| ■ <u>Aluminium Stamping</u>        | ■ <u>Industrial Battery Terminals Stalcop</u> |
| ■ <u>Weld Nuts &amp; Head Nuts</u> | ■ <u>Copper Forging</u>                       |
| ■ <u>Nut87530</u>                  | ■ <u>Copper Forged &amp; Machined</u>         |

**Clients**

**71**

**Contact**

**72**



At **Bendy Products Limited**, We Are Proud To Hold The Prestigious **IATF 16949:2016 Certification & ISO 9001 : 2015** Which Underscores Our **Commitment To Consistently Delivering Products** That Meet The **Highest Standards Of Quality And Client Expectations**. With **Extensive Experience Both Domestically And Internationally**, We Continuously Uphold **Global Standards In Craftsmanship And Performance**.

Our Ability To **Understand And Align With Our Clients' Goals** Is One Of Our **Greatest Strengths**. As A **Green Channel Supplier** For Esteemed Customers Such As **Lauritz & Knudsen, Siemens, Abb, Mahindra & Mahindra**, And More, We Have Successfully Fulfilled The Demanding Requirements Of **Just-in-time And Kanban Systems**, Demonstrating Our **Commitment To Operational Excellence And Timely Deliver**.

# LEADING INDUSTRY INNOVATION FOR OVER

# 40 YEARS





## OUR MISSION

**Delivering Superior Quality Products & Services With Innovation & Excellence To Exceed Client Expectations.**

## OUR VISION

**Global Leader In Switchgear & Auto Components, Renowned For Precision, Reliability & Innovation**



1973

### Journey Was Started

Established with a Small Stamping Business, Focusing Solely on Sheet Metal Processing.

- Founder Kamlesh Shah Took Over the Business.
- Expansion into Fabricated Assemblies, Diversifying the Product Range.

1975

2005

### Leadership Team Driving Growth

- Leadership Team Driving Growth: Zubin Shah, Managing Director, Brings 19+ Years of Expertise in Product Development, Finance, and International Marketing, Scaling the Business with Strong Brand Positioning. Amit Vora, Managing Director, with 20+ Years in Operations, Ensures Efficiency in Manufacturing and Quality.

- The Introduction of High-Speed Stamping Marked a New Generation of Technology and Portfolio Expansion.

2006

2009

- Purchased and Expanded Operations to Rebuild the Plant with Fabricated Assemblies.
- Entered the Forging & Machining Sector to Enhance Manufacturing Capabilities.



## Rebranding to **Bendy Products Limited**

- High-Speed Line Established to Improve Efficiency.
- Launched MCB Components, further Diversifying the Product Portfolio.
- Revenue Distribution:
  - Stamping – 30%
  - Precision Machining – 30%
  - Forging & Machining – 6%
  - High-Speed Stamping – 30%
  - Lugs & Power Terminals – 2%
  - Fabricated Assemblies – 2%

**2011**

**2012**

- Established a Forging & Machining Plant in Baroda.
- Introduced Lugs & Power Terminals to the Product Range.

**2014**

- MCB Components Technology Established.
- Expanded further into Precision Machining.
- Added Hoses to the Product Offerings.
- Continued Evolution with a Strong and Diversified Portfolio.
- Our Journey Continues as We Innovate and Expand to Meet the Demands of the Industry.

**2023**

- Established a Stamping Plant in Baroda

**2025**

- Standard Spring Underwent a Major Rebranding and is now Known as Bendy Products Limited.
- The Rebranding Reflects the Company's Growth, Innovation, and Expansion into New Markets and Product Categories.
- The New Identity Aligns with the Company's Vision to be a Leader in Precision Engineering and Manufacturing Solutions.



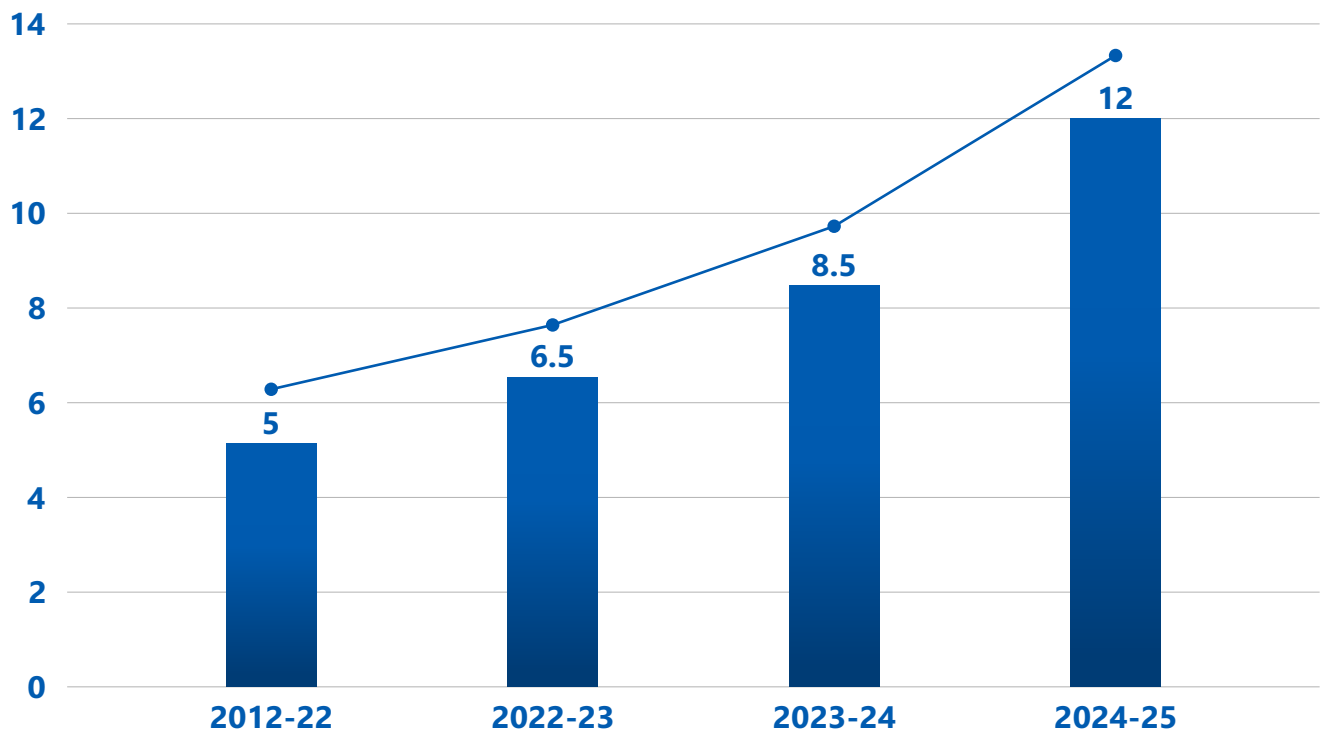


## ● Certified Quality & Reliability ISO 9001:2015 & Industry Standards

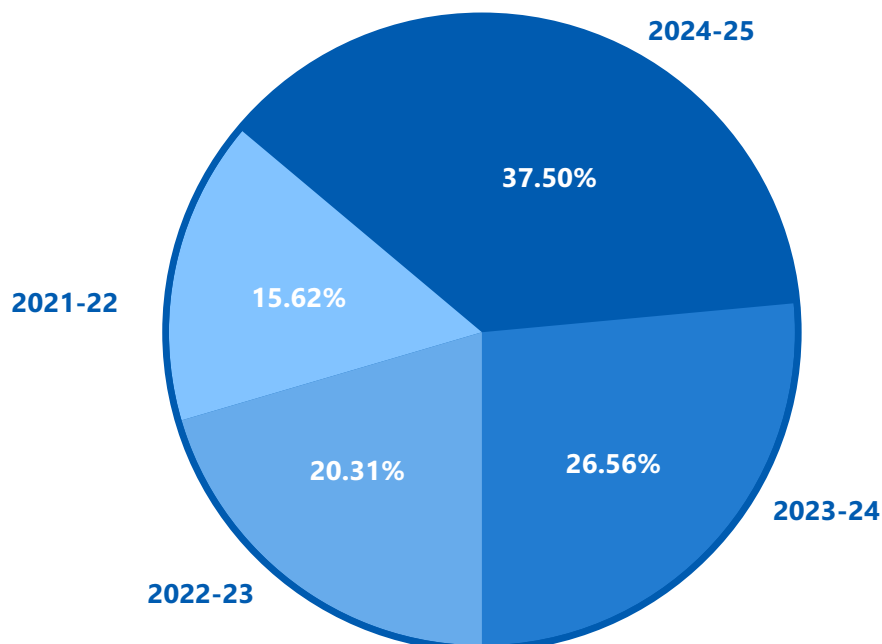
At Bendy Products Limited, We Are Committed To Delivering Products That Meet The Highest Standards Of Quality And Reliability. Our Manufacturing Processes Adhere To Stringent Quality Assurance Protocols, Ensuring Precision And Consistency In Every Spring We Produce. We Are Proud To Hold Industry-recognized Certifications That Validate Our Dedication To Excellence, Including Iso 9001:2015 For Quality Management Systems. These Certifications Demonstrate Our Ongoing Commitment To Innovation, Compliance, And Customer Satisfaction. By Combining Advanced Technology With Rigorous Testing And Inspection, We Guarantee Products That Not Only Meet But Exceed Our Customers' Expectations. Choose Bendy Products Limited For Certified Quality You Can Trust.

## | Sales Million

### IN USD



### IN %





**Reach : 11 Countries**  
**Operation : India**

**Customer  
Base  
Globally**

**Customers :**

- 30+ Customers
- Government & Public Sector Enterprises



## Manufacturing Facility

Our State Of The Art Manufacturing Facility At “vadodara” Is A Center For Excellence For The Manufacturing Precision Turned Components & Automotive, Sub Assemblies Assemblies For Industries Such As **Auto Motive, Engineering & Instrumentation**. From Cnc Turning Machine To Cylindrical Grinding Machine, We Are Well Equipped To Manufacture Top Class Quality Products.

**Our Manufacturing Facility Is Well Equipped With All The Essentialsafety Parameters & Technical Certifications.**

### Machining Key

- Forging Press 400t. (friction Press)
- Vertical Machine Centers.
- CNC Lathes.
- VMC'S with Pallet Changer
- Automatic Band Saw Cutting Machines
- Automatic Debarring & Polishing Machine.
- Drilling, Milling, Broaching & Other Conventional Machines.
- VMC's with 4th& 5th axis machining.
- 200kw Induction Heating Furnace

## MACHINING, FORGING & STAMPING UNIT



### MACHINING Plant-1

### STAMPING Plant-2





**CNC / VMC Machines**



**Multi Spindle Machine**



**Machining Facility**

## **Machining Plant**

## **Forging Technology**



## **Stamping Plant**



## **Stamping Machine**



## **Tool Room**



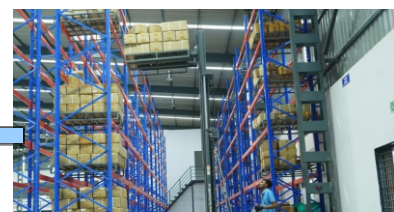
## **Storage**



**Raw Material Storage**



**Tool Storage**



**Finished Goods Storage**



## | Quality Facility

Bendy Products Is Committed To Manufacture And Supply High Quality **Sheet Metal** Pressedparts & **Machined Components** To The Complete Satisfaction Of Our Customer And Meet Statutory And Regulatory Requirements.

We believe In Continual Improvement In All Our Processes to Improve Our Product Quality.

### OBJECTIVES

- Minimizing Customer Complaints.
- Quality Improvement With Growing Customer Needs And Trends.
- Developing Team-work Concept Through Regular Training, Motivation And Interactions.
- Continual Improvement Through Innovation.
- Rigorous In-process Inspection.
- Trained Inspectors Using Technologically Advanced Equipment For Final Audit.
- A Comprehensive Tractability System.
- Packaging And Shipping Protect The Results Of Our Careful Manufacturing To Exacting tolerances.

### Quality Facility

- Inspection & Checking Equipment – Key
- Rapid I CNC based Vision Measuring (Magnification 67X)
- Fischer X-Ray Plating Thickness Measuring Machining
- Visual Measuring Machine (Sipcon – Magnification 7X)
- Trimos Digital Height Gauge
- Conductivity Tester
- Coating Thickness Tester
- Hardness Testing Machine.
- Shadow Grapher
- Acceptance gauges, Bore gauge, Thread Plug Gauge, and many more

#### Digital height gauge



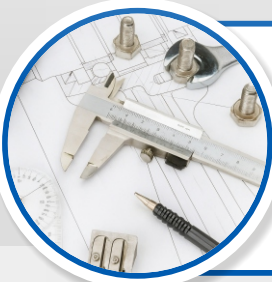
A Digital Height Gauge Is A Precision Measuring Instrument Used To Determine The Height Of Objects With High Accuracy. It Features A Digital Display For Easy And Quick Reading Of Measurements.

#### Coating Thicknessgauge



A Coating Thickness Gauge Is Used To Measure The Thickness Of Paint, Plating, Or Coatings On Various Surfaces. It Ensures Quality Control And Adherence To Industry Standards.

#### Vernier forheight gauge



A Vernier Height Gauge Is A Mechanical Measuring Tool Used To Measure Vertical Dimensions With Fine Precision. It Features A Vernier Scale For Accurate Readings And Is Commonly Used In Metalworking And Engineering.

#### X-RayMachine (FischerMake)



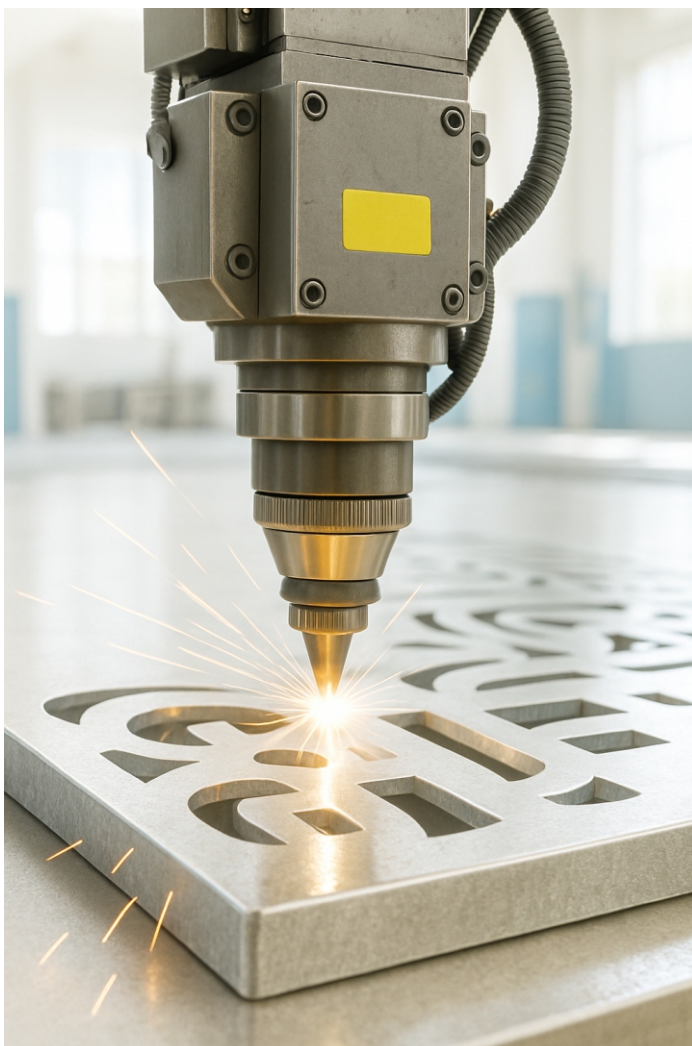
The Fischer Make X-ray Machine Is A High-precision Instrument Used For Non-destructive Coating Thickness Measurement And Material Analysis. It Delivers Accurate Results Using Advanced X-ray Fluorescence (xrf) Technology





# SHEET METAL (STAMPING)

Are You Looking For High-precision Sheet Metal Stamping Services? Our Advanced Sheet Metal Stamping Solutions Deliver Durable, Cost-effective, And Custom Metal Components Tailored To Your Exact Specifications. Using Cutting-edge Technology, We Ensure Precision, Efficiency, And Consistency For Industries Like Automotive, Aerospace, Electronics, And More. Whether You Need Progressive Die Stamping, Deep Drawing, Or High-volume Production, Our Expert Team Guarantees Superior Quality And Tight Tolerances. Trust Us For Reliable Sheet Metal Stamping That Enhances Your Product Performance While Reducing Production Costs



## Stamping Excellence Into Every Component.

**Sheet Metal (stamping) Is A High-speed Manufacturing Process That Involves Converting Flat Metal Sheets Into Precise Components Using Specialized Dies And Presses. It Plays A Crucial Role In Industries Such As Automotive, Aerospace, Electronics, And Industrial Machinery, Offering Excellent Dimensional Accuracy And Repeatability.**

A Wide Range Of Materials Such As Stainless Steel, Aluminum, Carbon Steel, And Copper Alloys Can Be Used, Making It Highly Versatile. Stamped Components Find Applications In Automotive Body Panels, Electrical Enclosures, Appliance Housings, Brackets, Clips, And More. Known For Its Cost-effectiveness, Speed, And Ability To Integrate With Automated Systems, Sheet Metal Stamping Is An Essential Solution For Producing High-quality Metal Parts At Scale Across Multiple Sectors.

## | Type of Products



# Box Clamp

**Secure. Strong. Reliable.**

Our Box Clamps Provide A Strong, Secure, And Durable Fastening Solution For A Wide Range Of Industrial And Commercial Applications. Designed With Precision And Reliability In Mind, These Clamps Offer Unmatched Performance Across Multiple Sectors.

### Key Features:

- **Robust Construction For Long-term Durability**
- **Corrosion & Wear Resistant With Premium Material Finish**
- **Heavy Load Bearing Capacity**
- **Easy Installation For Reduced Downtime**
- **Available In Standard & Custom Sizes**

Made From High-grade Materials, Our Clamps Are Built To Withstand Tough Working Environments. Whether You're Looking For Standard Solutions Or Tailor-Made Designs, Our Box Clamps Deliver Stability, Strength, And Long-lasting Performance every Time.

Choose Our Aluminium Stamping Services  
For Components That Are Lightweight,  
Reliable, And Engineered For Excellence.

# Aluminium Stamping

**Lightweight Strength.  
Precision Delivered.**



Our Aluminium Stamping Services Deliver Precision-engineered, Lightweight, And Corrosion-resistant Components For A Wide Range Of Industries, Including Automotive, Aerospace, Electronics, And More. Designed To Meet The Highest Standards, Our Stamping Processes Offer The Perfect Blend Of Durability, Accuracy, And Efficiency.

## Key Features:

- **Lightweight With High Strength**
- **Corrosion-resistant For Long Life**
- **Precision Forming & Tight Tolerances**
- **Cost-effective For Mass Production**
- **Ideal For Complex Geometries**

We Combine Cutting-edge Stamping Technology With A Skilled Engineering Team To Ensure Consistent Quality And Performance. Whether You Require Standard Parts Or Custom-designed Aluminium Components, We Are Your Reliable Partner For High-performance Solutions.



Choose Our Brackets For Installations That Demand Precision, Strength, And Peace Of Mind.



# Brackets

**Engineered for Strength.  
Built for Stability.**

Our Brackets Are Designed With A Focus On Durability, Strength, And Precision, Making Them The Perfect Solution For Structural Support, Mounting, And Reinforcement Across A Wide Range Of Industries. Whether It's A Heavy-duty Application Or A Custom Installation, Our Brackets Deliver Unmatched Performance.

## Key Features:

- Made From **High-quality Stainless Steel And Aluminium**
- Superior **Load-bearing Capacity**
- **Corrosion & Impact Resistance**
- **Precision Dimensions For Perfect Fit**
- Suitable For **Heavy-duty & Custom Installations**

Each Bracket Is Expertly Crafted To Meet Industry Standards, Offering Reliable Support And Secure Installations. From Custom Designs To Standard Fittings, We Ensure Every Product Meets Your Specific Requirements With Long-lasting Performance.



**Choose Our Brass Pins For High-Performance Connectivity And Long-lasting Mechanical Integrity Across Critical Applications.**

# Brass Pins

**Precision Machined.  
Reliable Connection.**



Our Brass Pins Are Crafted To Deliver Excellent Conductivity, Durability, And Corrosion Resistance, Making Them The Perfect Choice For Electrical, Automotive, And Industrial Applications. Engineered With High-precision Machining, These Pins Ensure A Perfect Fit, Reliable Connections, And Long-term Performance.

## Key Features:

- **High Electrical Conductivity**
- **Corrosion-Resistant Brass Alloy**
- **Superior Mechanical Strength**
- **Precision Machining for Perfect Fit**
- **Available In Standard & Custom Designs**

Manufactured Using Advanced Machining Techniques, Our Brass Pins Offer Exceptional Dimensional Accuracy And Durability. Whether You Need Micro Pins For Electronics Or Robust Pins For Heavy-duty Applications, We Deliver Precision-Engineered Solutions Tailored To Your Needs.

Choose Our Copper Joint Solutions For Efficient, Durable, And High-Performance Installations That Stand The Test Of Time.

Our Copper Joint Solutions Offer Exceptional Conductivity, Durability, And Corrosion Resistance, Making Them The Ideal Choice For Electrical, Plumbing, And Industrial Applications. Crafted With Precision Engineering And Premium Materials, These Joints Are Designed To Withstand Demanding Environments While Ensuring Secure And Long-lasting Connections.

#### Key Features:

- **High Electrical & Thermal Conductivity**
- **Excellent Corrosion Resistance**
- **Durable and Pressure-Resistant Design**
- **Precision-Fit for Leak-Free Connections**
- **Available in Standard & Custom Sizes**

Our Joints Are Engineered For Maximum Reliability And Efficient Installation, Even In High-pressure Or High-temperature Settings. Whether You Require Custom Components Or Standard Fittings, Our Solutions Guarantee Superior Performance And Longevity.

# Copper Joint

**Superior Conductivity.  
Trusted Connections.**



# Deep Draw Fasteners

**Precision Formed.  
Built for Strength.**



**Choose Our Deep Draw Fasteners For Precision-engineered Fastening Solutions That Stand Up To Tough Environments And Rigorous Demands.**

Our Deep Draw Fasteners Are Expertly Crafted To Deliver Superior Strength, Precision, And Long-term Durability In Demanding Environments. Ideal For Automotive, Aerospace, And Industrial Applications, These Fasteners Are Manufactured Using Advanced Deep Drawing Technology For Consistent Quality And Dimensional Accuracy.

## Key Features:

- **High Strength and Structural Integrity**
- **Excellent Dimensional Accuracy**
- **Corrosion and Wear Resistant**
- **Smooth Finish for Assembly Compatibility**
- **Available in Standard & Custom Sizes**

With State-of-the-art Deep Draw Manufacturing And Stringent Quality Control, Our Fasteners Provide Secure, Reliable Fastening Solutions That Meet The Highest Industry Standards. Whether For Mass Production Or Specialized Needs, We Offer Products That Ensure Efficient Assembly And Long-lasting Performance.



**Choose Our Left, Right & Middle  
Terminals For Precise, Durable, And High-  
Quality Electrical Connections Every Time.**

# Left Right & Middle Terminal

**Precision Connections.  
Reliable Performance.**



Our Left, Right, And Middle Terminals Are Engineered For Reliable, High-performance Electrical Connections In A Variety Of Automotive, Industrial, And Electronic Applications. Designed With Precision And Quality, These Terminals Deliver Exceptional Conductivity, Corrosion Resistance, And Long-term Durability.

## Key Features:

- **Left, Right & Middle Orientation Options**
- **High Conductivity Materials**
- **Corrosion-Resistant Finish**
- **Precision Fit for Secure Fastening**
- **Supports Custom & Standard Configurations**

Whether You Need Custom-designed Or Standard Terminal Solutions, Our Products Are Crafted To Ensure Secure Installation, Seamless Integration, And Reliable Circuit Connectivity. Backed By Quality Manufacturing, Our Terminals Meet The Rigorous Demands Of Modern Electrical Systems.

Choose Our Low Voltage Stamping Solutions For Smart, Efficient, And Reliable Electrical Components That Meet Today's Performance Demands.

Low Voltage Stamping Plays A Crucial Role In The Manufacturing Of Precision Electrical Components For A Wide Range Of Industries Including Automotive, Telecommunications, And Consumer Electronics. Engineered For Optimal Conductivity And Durability, Our Stamping Solutions Ensure Efficient Energy Transmission While Reducing Material Waste.

#### Key Features:

- **Excellent Conductivity** for Efficient Energy Flow
- **Precision Manufacturing** with Tight Tolerances
- **Durable, Corrosion-Resistant** Materials
- **Minimized Scrap** for Cost Efficiency
- **Available in Custom & Mass Production Volumes**

With Our Advanced Stamping Technology, We Deliver High-quality And Cost-effective Components Tailored To Your Needs. Whether You're Looking For Custom-Engineered Parts Or High-volume Production, Our Team Ensures Innovative Designs, Consistent Quality, And Superior Performance In Every Batch.

# Low Voltage Stamping

**Precision in Every Pulse.  
Power That Performs.**





Choose Our Push Rod Assy For Robust Performance,  
Precision Motion, And Lasting Reliability Across Your  
Mechanical Systems.

# Push Rod Assy

**Precision Motion.  
Built to Last.**



The Push Rod Assy Is A Critical Component In Engine And Mechanical Systems, Designed To Ensure Precise Motion Transfer Between Camshafts, Valves, Or Other Connected Parts. Built For Reliability And Performance, It Plays A Key Role In Maintaining The Smooth Operation Of Complex Mechanical Assemblies.

## Key Features:

- **High-Strength Construction** for Extreme Conditions
- **Exceptional Wear Resistance & Durability**
- **Precision Engineering** for Smooth Motion Transfer
- **Enhanced Efficiency & Operational Longevity**
- **Compatible with a Range of Mechanical Systems**

Manufactured Using Premium Materials And Advanced Machining Techniques, Our Push Rod Assemblies Are Engineered To Perform In High-stress Environments. Whether For Automotive, Industrial, Or Heavy-duty Applications, They Deliver Consistent Performance, Minimal Maintenance, And Extended Service Life.

Our Components Are Engineered To Ensure Reliable Power Transmission, Delivering Consistent Performance, Reduced Downtime, And Optimal Efficiency Across Demanding Applications.



# Side Panels

Engineered for  
Strength.  
Designed for Style.

Our Side Panels Are Crafted To Meet The Highest Standards Of Durability, Aesthetics, And Structural Integrity. Whether You're In The Automotive, Industrial, Or Commercial Sector, Our Panels Are Built To Elevate Performance And Design.

## Key Features:

- **High-Strength Materials:** Built to withstand daily wear, heavy use, and extreme conditions
- **Impact & Corrosion Resistant:** Enhanced longevity in harsh environments
- **Precision Engineering:** Guarantees accurate fit and seamless installation
- **Aesthetic Appeal:** Sleek surfaces enhance your product's visual value
- **Versatile Applications:** Ideal for vehicles, equipment enclosures, and architectural facades

We Are Committed To Delivering Consistent Quality Through Rigorous Control Processes, Offering Custom Sizes And Finishes To Suit Your Specific Needs. Our Expert Design Team Ensures Precision And Support At Every Stage, While Our Timely Delivery And Reliable Service Make Us A Trusted Partner Across Industries.

# Switchgear Stamping

**Precision Stamping for  
Safe & Reliable  
Power Control**



Our Switchgear Stamping Solutions Are Engineered To Support High-performance Electrical Distribution And Control Systems. With A Focus On Precision, Durability, And Conductivity, Our Stampings Are A Critical Part Of Components Like Circuit Breakers, Relays, And Switch Assemblies.

## Key Features:

- **Precision-Engineered Components** – Built to meet tight tolerances for reliable performance
- **Superior Conductivity** – Manufactured using high-grade conductive materials
- **Long-Lasting Durability** – Withstands electrical, thermal, and mechanical stress
- **Advanced Manufacturing** – CNC, die-punching, and automated press techniques

We Deliver High-precision Switchgear Stampings With A Focus On Quality, Safety, And Customization. backed By Advanced Facilities And Expertise, We Meet Global Standards And Your Exact Specs on Time, Every Time.



# PRECISION MACHINING COMPONENTS

Our Precision Machining Components Are Engineered To Deliver Exceptional Accuracy, Durability, And Performance Across Various Industries, Including Automotive, Aerospace, Medical, And Industrial Manufacturing. Using Advanced Cnc Technology, Our Precision Machining Components Meet Tight Tolerances And Exact Specifications, Ensuring Flawless Functionality In Critical Applications. Manufactured From High-quality Materials, These Components Offer Superior Strength, Wear Resistance, And Longevity. Whether You Need Custom Or Standard Precision Machining Components, We Provide Reliable Solutions That Enhance Efficiency, Reduce Downtime, And Optimize Operational Performance.



## Engineered for Accuracy, Built for Performance

Precision Machining Components Are High-Accuracy Parts Manufactured With Tight Tolerances Using Advanced Machining Processes Like Cnc Turning, Milling, Grinding, And Edm. These Components Are Essential In Industries Such As Aerospace, Automotive, Medical, Electronics, And Robotics, Where Consistency, Reliability, And Dimensional Precision Are Critical.

Commonly Made From Materials Like Stainless Steel, Aluminum, Brass, Titanium, And Engineering Plastics Such As Peek And Delrin, These Components Include Shafts, Flanges, Gears, Housings, Bushings, And Threaded Fittings. Known For Their Excellent Surface Finish, Durability, And Ability To Withstand High-stress Environments, Precision Machining Components Play A Vital Role In Ensuring The Optimal Performance And Safety Of Complex Mechanical Systems.

## | Type of Products



# Aluminium Rings

**Precision Engineered.  
Performance Delivered.**

Our Aluminium Rings Are Engineered For Strength, Precision, And Reliability. Lightweight Yet Incredibly Durable, These Rings Are Ideal For Demanding Industries Such As Aerospace, Automotive, Industrial Machinery, And Decorative Applications.

### Key Features:

- **Lightweight & Durable**
- **Corrosion-Resistant**
- **Excellent Strength-to-Weight Ratio**
- **Superior Thermal Conductivity**
- **Wear & Tear Resistant**

Whether You're Seeking Structural Integrity, Thermal Management, Or Precision Sealing, Our Aluminium Rings Deliver Exceptional Reliability In Any Setting. Designed With Meticulous Attention To Detail, Each Ring Ensures Optimal Functionality In Both Standard And Custom Applications.



Every Bearing Bkt is crafted with exact specifications to ensure perfect fit and flawless function.



# Bearing Bkt

**Strength. Precision.  
Reliability.**

Our Bearing Bkt (bearing Bracket) Is A Critical Support Component That Ensures Proper Alignment And Firm Stability For Bearings Across Industrial, Automotive, And Specialized Machinery.crafted With High-grade Materials And Built To Endure, Our Bearing Bkts Are Designed To Withstand Heavy Loads, Reduce Vibrations, And Perform In Even The Most Demanding Environments.

## Key Features:

- **Stable Support** for Bearings
- **High Strength & Durability**
- **Accurate Alignment** for Smooth Rotation
- **Resistant to Wear, Load & Harsh Conditions**
- **Precision-Fit** for Seamless Integration

From Precision Crafting To Rugged Use, Our Bearing Bkt Is Designed To Deliver Maximum Functionality And Efficiency In All Operating Conditions. Improve System Longevity, Reduce Maintenance, And Ensure Smooth Rotational Performance With Our Robust Solution.

Choose performance built for precision and reliability. Engineered to last, even in the toughest conditions.



# Brass Cage

**Precision Built for  
Performance in Motion**

Our Brass Cage plays a vital role in bearing assemblies by ensuring smooth motion, reduced friction, and long-lasting performance. Crafted with high-precision techniques, it offers exceptional strength, corrosion resistance, and thermal stability. Trusted across automotive, aerospace, and industrial applications, it delivers reliable performance even under high-speed and heavy-load conditions.

## Key Features:

- **High Strength & Durability**
- **Excellent Thermal Stability**
- **Corrosion & Wear Resistant**
- **Reduces Friction & Enhances Rotation**
- **Performs Reliably Under Extreme Conditions**

Choose Performance That Delivers Every Time. Our Components Are Built For Strength, Precision, And Reliability In Demanding Applications. When Efficiency And Durability Matter Most, Trust In Solutions That Are Engineered To Perform.

Brass fittings deliver consistent performance with excellent strength and leak-free reliability. Perfect for demanding applications where durability and precision matter



# Brass Fittings

**Strength. Versatility.  
Reliability.**

Brass Fittings are essential components across plumbing, electrical, and industrial sectors. Engineered from a robust copper-zinc alloy, these fittings are built to last—even in the most demanding environments.

## Key Features:

- **Durability** – Withstand wear, tear, and high pressure
- **Corrosion Resistance** – Ideal for long-term use in water & gas lines
- **Versatility** – Suitable for a wide range of applications
- **Custom Fit** – Available in various shapes, sizes, and thread types

Professionals across industries trust high-quality brass fittings for their ability to deliver consistent performance and efficient installations. Whether it's a residential setup or a commercial project, brass remains the preferred choice for lasting results.

Brass inserts deliver high-performance fastening with superior grip and load-bearing strength. Engineered for tough environments, they ensure long-term stability and precision fit.



# Brass Inserts

**Strong Connections.  
Lasting Performance.**

Brass Inserts are essential fastening solutions used to create secure, long-lasting threaded connections in plastic, wood, and composite materials. Built from premium-quality brass, they offer the perfect balance of strength, corrosion resistance, and adaptability across industries.

## Key Features:

- **High Tensile Strength** – Withstands heavy loads and pressure
- **Corrosion Resistant** – Ideal for harsh or high-humidity environments
- **Versatile Design** – Suits plastics, wood, and composite applications
- **Precision Threads** – Ensure smooth, tight, and secure fit
- **Easy Installation** – Available in press-fit, heat-fit, and ultrasonic styles

Used by professionals worldwide, brass inserts offer enhanced durability, optimum load-bearing, and consistent performance—making them the smart choice for both mass production and specialized builds.



Brass Rings are versatile components known for their strength, durability, and polished appearance. Crafted from high-grade brass, they deliver exceptional performance across a wide range of industrial and decorative applications.

#### Key Features:

- **Corrosion Resistant** – Ideal for indoor and outdoor use
- **High Strength-to-Weight Ratio** – Durable yet lightweight
- **Polished Finish** – Aesthetic appeal for decorative use
- **Versatile Use** – Suitable for functional and ornamental applications
- **Customizable Designs** – Available in various sizes, shapes, and finishes

Brass Rings provide reliable mechanical support, resist wear and corrosion, and maintain their visual appeal over time. Whether it's performance under pressure or elegance in design, these rings strike the perfect balance.

From engineers to artisans, professionals rely on brass rings for their functional reliability and refined finish. Their ability to perform in harsh environments makes them a go-to component across industries.

## Brass Rings

**Superior. Reliable.  
Refined. Durable.**



# Engine & Transmissions Parts

**Power. Precision.  
Performance.**



Engineered for peak performance, these parts ensure smooth power delivery and efficient operation. Built to handle extreme conditions, they reduce downtime and maximize machine output.

Engine and Transmission Parts form the backbone of mechanical power systems, ensuring the smooth, efficient, and reliable operation of vehicles and heavy machinery. Built from high-quality materials like steel, aluminium, and brass, these components are designed to endure extreme heat, pressure, and wear.

## Key Features:

- **High-Performance Materials** – Engineered to resist wear and heat
- **Precision Engineering** – Manufactured to exacting tolerances
- **Long-Term Durability** – Reduces replacement cycles and maintenance costs
- **Application Flexibility** – Automotive, industrial, and heavy-duty compatible
- **Custom Sizes & Configurations** – Tailored to specific machine requirements

Every component is crafted to maximize efficiency, minimize downtime, and enhance overall system life—ensuring top-notch performance even under the harshest operating conditions.

# Key Components

**Precision Parts.  
Proven Results.**



Designed for consistent performance, key components ensure smooth operation under demanding conditions.

Key Components are the fundamental elements that ensure the seamless functioning, durability, and efficiency of machines, systems, and devices across a wide range of industries. Precision-engineered from premium materials such as steel, brass, and aluminium, these components are built to withstand intense pressure, high temperatures, and long-term usage.

## Key Features:

- **High-Strength Materials** – Built to resist wear and fatigue
- **Precise Engineering** – Supports consistent and accurate operations
- **Long Service Life** – Reduces maintenance frequency and costs
- **Versatile Applications** – Suitable for automotive, electronic, and industrial systems
- **Enhanced Productivity** – Increases machine uptime and overall output

reliability begins with the right components. Key Components play a crucial role in optimizing system performance, extending operational life, and reducing downtime—making them indispensable for high-performance engineering.



Pivot Shafts are critical mechanical components that enable controlled rotation and movement while maintaining system stability and load-bearing support. Engineered from high-strength materials such as steel and stainless steel, they are built to deliver durability, corrosion resistance, and long-term performance in demanding environments.

#### Key Features:

- **High Load-Bearing Capacity** – **Handles continuous motion and heavy-duty applications**
- **Corrosion Resistant** – **Suitable for outdoor and high-moisture environments**
- **Precision Machining** – **Ensures accurate alignment and smooth movement**
- **Friction Reduction** – **Enhances mechanical efficiency and performance**

Built for precision, strength, and longevity, our pivot shafts support smooth movement even under high stress and harsh conditions. Their robust construction ensures minimal downtime, making them the preferred choice for reliability in motion.

Pivot shafts deliver smooth, controlled movement with exceptional strength and stability. Built to perform under pressure, they ensure long-term efficiency in every application.

# Pivot Shafts

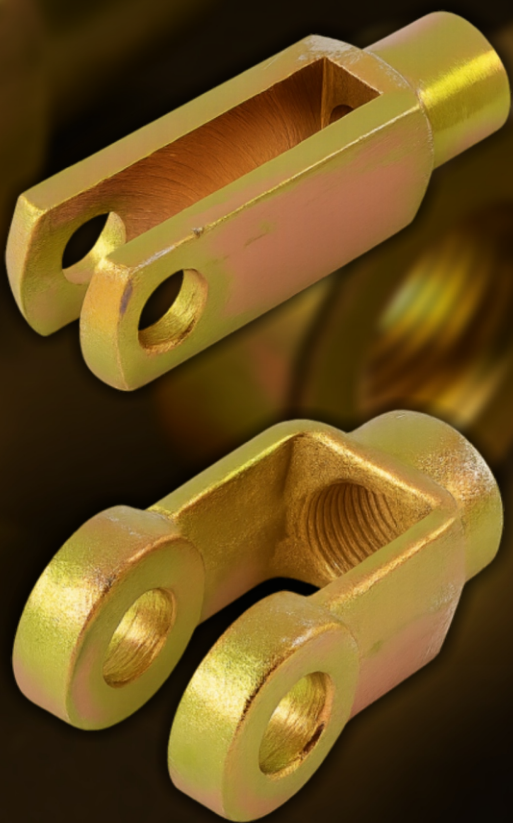
**Precision Movement.  
Maximum Stability.**





# Yoke & Clevis

**Precision Connection.  
Trusted Strength.**



Engineered for peak performance, these parts ensure smooth power delivery and efficient operation. Built to handle extreme conditions, they reduce downtime and maximize machine output.

Yokes and Clevises are vital mechanical linkages used to transmit force and enable controlled movement across a wide range of systems. Built from durable materials like steel, aluminium, and brass, they provide secure, stable connections while allowing for angular or linear motion—making them indispensable in heavy-duty and high-performance environments.

## Key Features:

- **High-Strength Construction** – Handles heavy loads and mechanical stress
- **Smooth Articulation** – Allows for flexibility without compromising stability
- **Corrosion Resistance** – Suitable for tough environments and outdoor applications
- **Precision Fit** – Ensures tight, reliable connections
- **Versatile Use** – Ideal for dynamic systems requiring motion and load transfer

Engineered for strength, stability, and longevity, these components are essential to the smooth and safe operation of any mechanical system. Whether for precise motion control or rugged load-bearing connections, they offer unmatched reliability and performance.

# COPPER MACHINING COMPONENTS

Our Copper Machining Components are Engineered for High Precision, Durability, and Superior Conductivity, Making them Ideal for Electrical, Automotive, and Industrial Applications. Manufactured using Advanced CNC Technology, Our Copper Machining Components ensure Tight Tolerances and Excellent Thermal Performance. With Corrosion Resistance and Excellent Machinability, These Components Enhance Efficiency and Longevity in Critical Systems. Whether for Custom Prototypes or Large-Scale Production, Our Copper Machining Components are Designed to meet your exact Specifications.

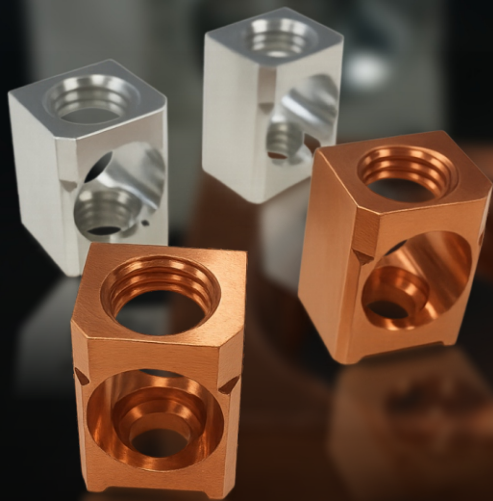


## Machining Excellence in Every Copper Component

Our copper machining components are designed with precision engineering and manufactured using high-grade copper materials. With excellent conductivity, corrosion resistance, and dimensional accuracy, these components are ideal for applications across electrical, thermal, and mechanical industries.

Backed by advanced machining capabilities and a commitment to quality, we deliver components that meet exact client specifications. Whether for high-performance electronics, heat exchangers, or industrial equipment, our copper solutions ensure reliability, efficiency, and unmatched performance in every use.

## | Type of Products



# Box Clamp

**Engineered for Secure  
& Reliable Connections**

Our Box Clamps are specifically designed to deliver secure, durable, and long-lasting connections across a wide range of electrical and industrial applications. Built using premium-grade materials, these clamps ensure superior conductivity, excellent corrosion resistance, and enhanced mechanical stability.

### Key Features:

- **High Conductivity** – Ensures optimal electrical performance
- **Corrosion Resistant** – Withstands harsh industrial environments
- **Precision Engineered** – Provides a tight and reliable grip
- **Easy Installation** – Simplifies on-site assembly
- **Anti-Loosening Design** – Prevents disconnections over time

At the heart of our engineering is a commitment to quality, reliability, and performance. Our box clamps are not just components—they are precision-crafted solutions built to endure. With a focus on superior materials, advanced design, and strict quality control, we ensure every product meets the highest industry standards.



Our breaker terminals are widely used in industrial control panels, ensuring secure and reliable electrical connections in high-load environments.

# Breaker Terminals

**Precision. Performance.  
Protection.**



Our Breaker Terminals are crafted for secure, high-performance electrical connections in circuit breakers and power distribution systems. Manufactured with precision engineering and premium-grade materials, these terminals deliver exceptional conductivity, corrosion resistance, and long-term reliability, even under demanding electrical loads.

## Key Features:

- **High Conductivity** – Ensures efficient current flow
- **Corrosion Resistant** – Built for tough environments
- **High Load Capacity** – Handles heavy electrical currents safely
- **Durable Construction** – Withstands wear and thermal stress
- **Easy to Install** – Saves time during panel or breaker setup

We combine engineering expertise with strict quality control to provide products that meet the evolving demands of modern electrical systems. Our Breaker Terminals are tested for high-performance, trusted by professionals, and tailored for seamless integration in any setup.



Ideal for industrial machinery and equipment, delivering consistent electrical performance under heavy use.



# Contact Terminals

**Reliable Connections.  
Lasting Performance.**

Our Contact Terminals are expertly designed to deliver superior conductivity, secure electrical connections, and long-term durability across a wide range of applications. Made from high-quality materials, these terminals offer excellent corrosion resistance and high thermal stability, making them ideal for demanding environments.

## Key Features:

- **Superior Conductivity** – Reduces resistance and boosts efficiency
- **Corrosion Resistant** – Performs in harsh and high-moisture conditions
- **High Thermal Stability** – Maintains integrity under high temperatures
- **Precision Grip Design** – Ensures firm, vibration-proof connection
- **Durable Construction** – Withstands wear and tear over time

With a commitment to quality and innovation, we deliver high-performance contact terminals that meet the exacting demands of modern electrical systems. Backed by rigorous testing and precision manufacturing, our terminals offer enhanced durability, optimized electrical flow, and secure installation

# Copper Forged & Machined

**Precision Forged.  
Expertly Machined. Built to Last.**



Our Copper Forged & Machined Components are engineered for exceptional strength, conductivity, and long-term durability, making them ideal for a wide range of industrial and heavy-duty applications. Utilizing advanced forging and precision machining techniques, we deliver components with superior dimensional accuracy, high thermal stability, and excellent corrosion resistance.

## Key Features:

- **Excellent Electrical Conductivity** – Ideal for power-intensive applications
- **Superior Corrosion Resistance** – Performs reliably in harsh environments
- **Precision Machined** – Ensures tight tolerances and perfect fit
- **Thermal Stability** – Maintains performance under high temperatures
- **Custom & Scalable** – Available for both prototypes and bulk orders

With deep industry expertise and cutting-edge manufacturing capabilities, we offer Copper Forged & Machined Solutions that meet the highest quality and safety standards. From custom prototypes to large-scale production, our team ensures precision, reliability, and rapid turnaround.

Ideal for use in electrical components, automotive systems, heavy machinery, energy infrastructure, and custom industrial assemblies.



# Copper Forging

**Precision Forged for  
Power, Performance  
& Reliability**

Our Copper Forging Solutions are engineered to deliver exceptional strength, durability, and electrical conductivity, even in the most demanding industrial environments. Using advanced forging techniques, we manufacture components with superior mechanical integrity, precise dimensions, and a flawless surface finish, ensuring long-term performance and efficiency.

## Key Features:

- **High strength and durability**
- **Excellent electrical conductivity**
- **Superior corrosion resistance**
- **Withstands high temperatures**
- **Precision-forged with tight tolerances**

We combine metallurgical expertise with state-of-the-art forging technology to offer high-performance copper components that meet or exceed the most rigorous industry standards. Our forgings are crafted to maximize longevity, safety, and efficiency, making them the preferred choice for mission-critical applications.



Ideal for automotive, renewable energy, and industrial power systems requiring reliable and efficient energy transfer.

Our Industrial Battery Terminals – Stalcop Series are built to deliver superior conductivity, unmatched durability, and secure power transmission across a wide range of industrial, automotive, and renewable energy systems.

Crafted from high-grade Stalcop alloy, these terminals are designed to meet the toughest operational demands while offering excellent corrosion resistance and thermal stability.

#### Key Features:

- **High Conductivity** – Ensures efficient power transfer
- **Corrosion Resistant** – Withstands harsh environments
- **High Thermal Stability** – Performs under extreme temperatures
- **Durable & Long-Lasting** – Built for industrial-grade use

Our Industrial Battery Terminals Stalcop are crafted with precision to ensure maximum conductivity and reliability in every application. We use only high-quality materials that offer superior corrosion resistance and thermal stability, even in extreme conditions.

## Industrial Battery Terminals Stalcop

**Power That Lasts.  
Performance You Can Trust.**

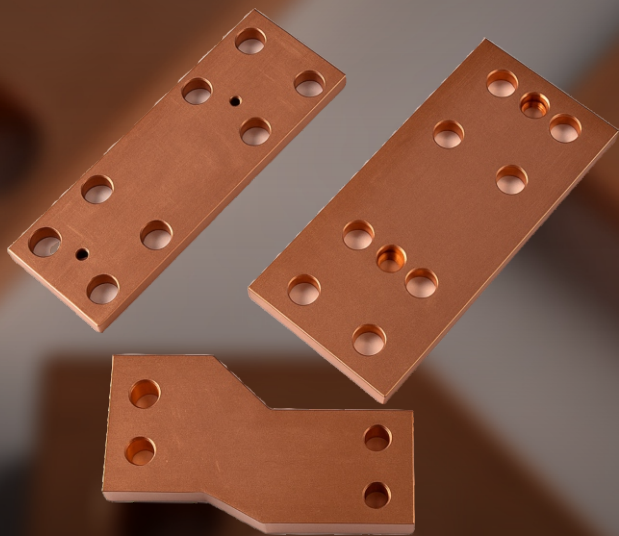




The JVD 0082 is ideal for use in power distribution systems, automotive electrical assemblies, and heavy-duty industrial machinery, where stable, high-performance connections are essential for safety, efficiency, and long-term reliability.

# JVD 0082

**Precision-Engineered  
for High-Performance  
Electrical and  
Industrial Applications**



The JVD 0082 is a high-quality, precision-engineered component designed to meet the demanding needs of modern electrical and industrial systems. Built from premium-grade materials, it delivers outstanding electrical conductivity, mechanical strength, and corrosion resistance, ensuring reliable performance in even the most challenging environments.

## Key Features:

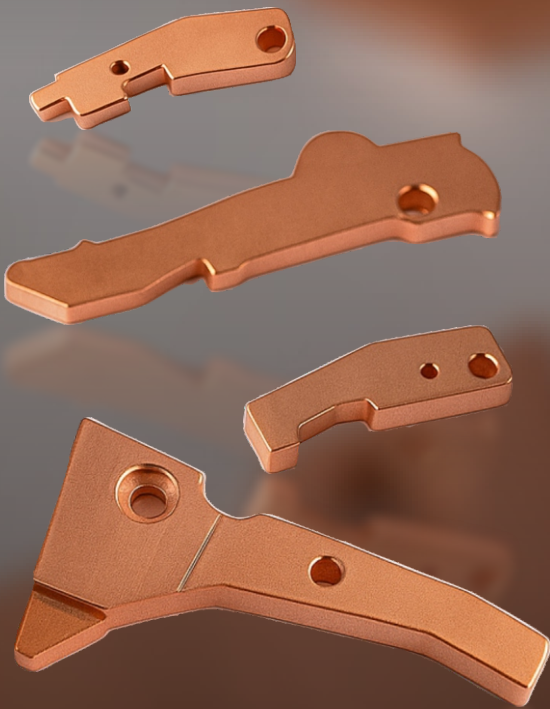
- **High Electrical Conductivity**
- **Superior Corrosion Resistance**
- **Precision-Engineered Fit**
- **Long-Term Durability**
- **Reliable Electrical Performance**
- **Ideal for Heavy-Duty Applications**

At our core, we prioritize quality, precision, and performance. Our components are engineered using advanced manufacturing techniques and premium-grade materials, ensuring unmatched durability and conductivity.

Ideal for use in industrial and commercial power distribution systems, MCCB Contacts ensure reliable performance in environments where efficiency, safety, and system uptime are critical.

# MCCB CONTACTS

**Precision. Performance.  
Protection.**



Our MCCB Contacts are meticulously engineered to deliver superior conductivity, long-term durability, and efficient electrical performance within Molded Case Circuit Breakers. Crafted from high-quality materials and manufactured using precision machining techniques, these contacts are built to handle high current loads while ensuring minimal wear and excellent arc resistance.

## Key Features:

- **High Electrical Conductivity** for efficient power transfer
- **Excellent Arc Resistance** ensures safety and longer life
- **Corrosion-Resistant Materials** for harsh environments
- **Minimal Contact Wear** reduces maintenance frequency

We bring together engineering excellence, stringent quality control, and cutting-edge manufacturing to offer MCCB Contacts that deliver consistent performance and lasting value.

Our Plated Bus Bars are essential for electrical power distribution, offering superior conductivity, exceptional durability, and resistance to corrosion. Designed with high-performance plating options such as Tin, Silver, or Nickel, these bus bars are built to deliver optimized electrical efficiency, reduced energy loss, and long-lasting reliability—even in the most demanding industrial and environmental conditions.

#### Key Features:

- **Reduced energy loss and improved system efficiency**
- **High electrical conductivity**
- **Excellent corrosion resistance**
- **Available with Tin, Silver, or Nickel plating**
- **Durable construction for long service life**

Engineered with precision plating and superior materials, our bus bars provide a cost-effective and efficient solution for critical power distribution needs. Whether you're optimizing a large-scale industrial setup or building high-performance energy systems, our plated bus bars offer the strength, efficiency, and reliability you demand.

Ideal for automotive, renewable energy, and industrial power systems requiring reliable and efficient energy transfer.

## PLATED BUS BARS

**Efficient Power Flow.  
Reliable Performance.**





Ideal for use in substations, industrial plants, commercial power grids, and smart energy distribution systems.

# VCB & RMU Components

**Powering Reliability.  
Enhancing Protection.**



Our VCB (Vacuum Circuit Breaker) & RMU (Ring Main Unit) Components are engineered to ensure efficient, safe, and long-lasting electrical distribution across medium-voltage applications. These components are vital in delivering uninterrupted power and exceptional system protection in modern electrical networks.

## Key Features:

- **High arc quenching capacity** with zero maintenance
- **Compact design** for **flexible installations**
- **Superior insulation** and **fault protection**
- **Durable construction** for long operational life
- **Optimized for harsh** and **high-load environments**

We are committed to delivering precision-engineered components made from premium-grade materials that ensure exceptional durability, conductivity, and long-term performance. Our expertise lies in providing customized solutions tailored to meet the specific needs of diverse industries.



# MULTI FORMED PARTS

Multi-Formed Parts are precision-engineered components crafted to serve a wide spectrum of manufacturing demands, offering unmatched strength, flexibility, and reliability. Developed using advanced forming technologies, these parts are meticulously shaped to meet tight tolerances and exact design specifications. Their ability to adapt to intricate configurations makes them indispensable in high-performance sectors like automotive, aerospace, electronics, and general industrial machinery. Engineered for optimal compatibility, they seamlessly integrate into complex assemblies, reducing the need for secondary operations, minimizing material waste, and streamlining the production process.



## Multi-Formed Parts that Integrate with Perfection

The use of Multi-Formed Parts ensures enhanced operational efficiency and product longevity while meeting stringent quality and performance standards. Whether it's for structural frameworks, electronic enclosures, or precision mechanical systems, these components deliver consistent performance across diverse environmental and load conditions.

Their cost-effective nature, combined with exceptional dimensional stability and structural integrity, makes them an ideal choice for manufacturers aiming to boost productivity without compromising on quality.

## | Type of Products

### Clamp & Stainless Steel Hose Clamps

**Durable  
Corrosion-Resistant  
Leak-Proof**



Our Clamp & Stainless Steel Hose Clamps are engineered for secure, durable, and leak-proof connections in a wide range of industrial, plumbing, and automotive applications. Made from premium-grade stainless steel, these clamps offer superior corrosion resistance, ensuring long-lasting performance even in extreme and demanding conditions.

#### Key Features:

- **Premium Stainless Steel** – High resistance to rust, corrosion, and environmental wear
- **Leak-Proof Seal** – Designed to maintain a firm grip and prevent leaks under pressure
- **High Tensile Strength** – Withstands high pressure and extreme conditions

We are committed to delivering quality you can trust. Our Clamp & Stainless Steel Hose Clamps are tested for strength and durability, ensuring top performance in both standard and heavy-duty applications. With a broad product range, competitive pricing, and fast service, we aim to provide dependable solutions tailored to your operational needs.

Our Electrical Contacts are ideal for use in industrial automation systems, electronic devices, power distribution panels, control systems, automotive electronics, and telecommunications equipment.



# Electrical Contacts

**Precision Connectivity  
for Maximum  
Performance**

Our high-quality Electrical Contacts are designed to deliver superior performance, reliability, and durability across a wide range of electrical and electronic applications. Built with precision and crafted using premium materials, these contacts ensure optimal conductivity, minimal wear, and long-term operational efficiency.

## Key Features:

- **Excellent Conductivity** – Ensures minimal power loss and stable current flow
- **Long Service Life** – Designed to withstand repeated use without degradation
- **Wear-Resistant Build** – Reduces friction and prevents early failure
- **Precision Fit** – Engineered for seamless integration into electrical systems

With a strong focus on quality, precision, and durability, we offer contacts that meet stringent industry standards and deliver consistent performance. Our wide product range, backed by engineering expertise and customer-centric service, ensures you get the right contact solution tailored to your specific needs.



Ideal for use in automotive engines, plumbing systems, industrial machinery, and HVAC units, our hose clamps provide secure, vibration-resistant sealing to prevent leaks and ensure safe operation.

# Hose Clamps

**Secure, Durable & Leak-Proof Solutions**



Our premium Hose Clamps are engineered to provide a tight, secure seal for pipes, hoses, and tubing in a variety of demanding environments. Built from corrosion-resistant stainless steel, these clamps offer long-lasting performance, strong grip, and easy adjustability. Whether for automotive repair, industrial use, or plumbing systems, our hose clamps deliver consistent reliability and strength.

## Key Features:

- **Stainless Steel Construction**
- **Corrosion & Rust Resistant**
- **Strong, Leak-Proof Grip**
- **Available in Various Sizes & Types**
- **Easy Installation & Adjustment**

We offer top-quality hose clamps that meet industry standards for durability, strength, and reliability. With a wide range of adjustable, worm gear, and T-bolt clamps available, we cater to both standard and custom needs. Our commitment to quality materials, quick availability, and customer-focused service makes us the trusted choice for professionals across multiple sectors.



R Pins are widely used in automotive repairs, heavy equipment, agricultural machinery, trailers, and industrial assemblies.



# R Pins

**Secure • Reliable • Easy to Use**

R Pins are essential fastening components designed to secure machinery parts and assemblies with ease and reliability. Made from high-quality, durable materials, R Pins provide a tight, vibration-resistant hold that prevents components from loosening during operation. Their quick-install design makes them a preferred choice for professionals in automotive, construction, and industrial applications.

## Key Features:

- **High Strength & Durability**
- **Corrosion-Resistant Finish**
- **Easy to Install & Remove**
- **Vibration-Resistant Fit**
- **Available in Multiple Sizes**

We offer premium-grade R Pins that combine strength, ease of use, and long-lasting performance at competitive prices. Our products are precision-manufactured to meet industrial standards, ensuring a secure fit and reliable fastening in every use. With a wide selection of sizes and finishes, we provide tailored solutions for various applications, backed by responsive support and consistent quality.

Our terminals are widely used in industrial control panels, automotive wiring, consumer electronics, electrical appliances, and power distribution systems.

# Electrical Terminals

- **Reliable Connections**
- **Lasting Performance**



Our high-quality Electrical Terminals are engineered to provide secure, efficient, and durable electrical connections across various applications. Designed for ease of installation and long-term performance, these terminals ensure excellent conductivity and withstand harsh conditions, making them ideal for both standard and heavy-duty use.

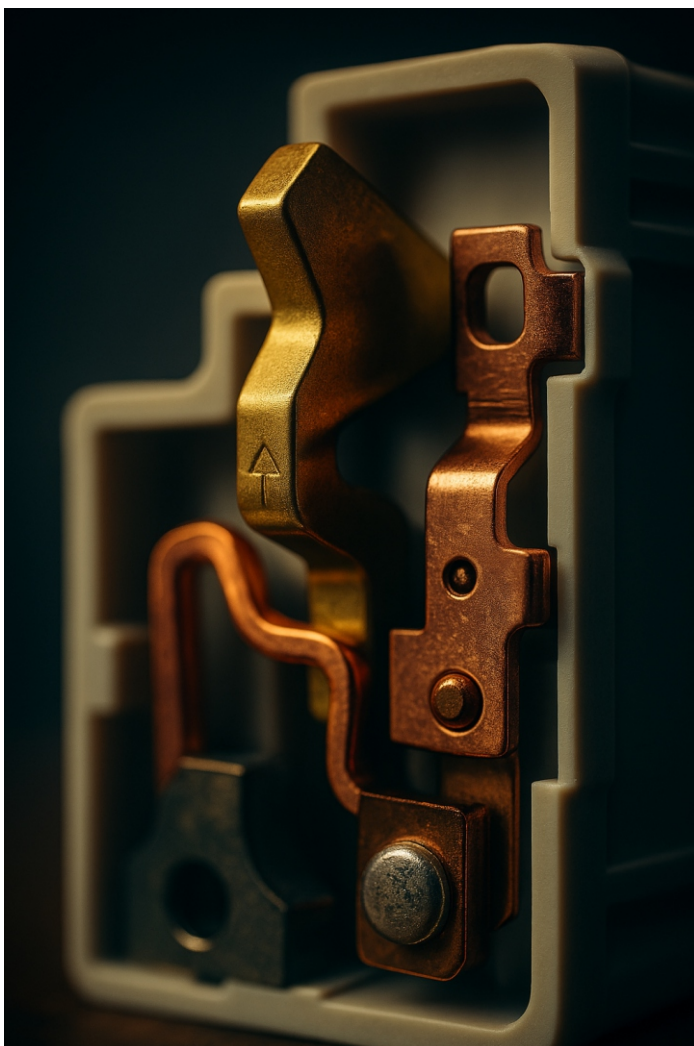
## Key Features:

- **Excellent Electrical Conductivity**
- **Durable & Corrosion-Resistant Build**
- **Quick & Easy Installation**
- **Precision-Fit Design**
- **Available in Various Types & Sizes**

We provide terminals that meet rigorous quality and safety standards, ensuring dependable performance in critical applications. Our products are manufactured from premium materials, offering long service life, easy usability, and low maintenance. Backed by a wide product range and expert support, we help you find the perfect terminal solution tailored to your specific needs.

# MCB PARTS

MCB Parts are critical components that ensure the efficient and safe operation of Miniature Circuit Breakers (MCBs), which serve as frontline protection in modern electrical systems. These components—including the switch, spring mechanism, trip unit, and contacts—work in tandem to detect and interrupt electrical faults, such as overloads and short circuits, before they cause damage. Each part plays a specific role: the trip unit senses current fluctuations, the spring mechanism activates the disconnection, and the contacts open the circuit instantly to stop the flow of electricity. Engineered with precision and built for durability, MCB parts must withstand frequent switching, high current loads, and harsh operating environments without compromising performance. Their robust design ensures that the breaker operates quickly, accurately, and reliably, every time a fault occurs.



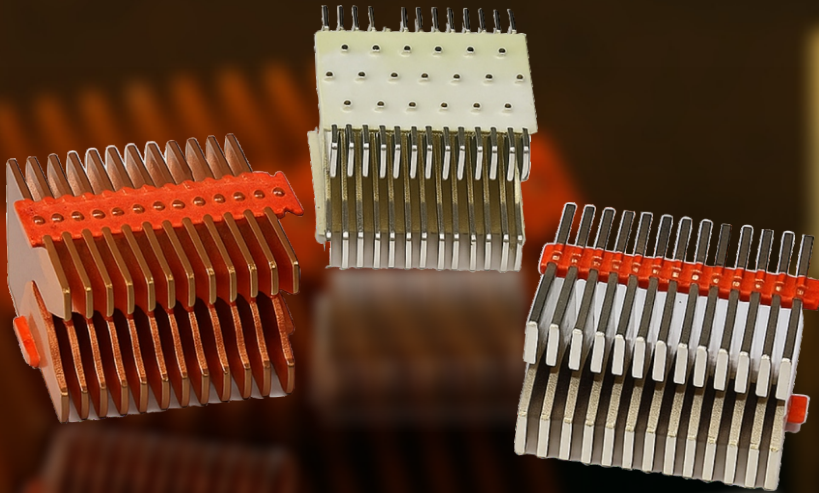
## MCB Parts Built for Critical Protection

Whether you're upgrading existing systems or working on new installations, using high-quality MCB parts is essential for achieving long-term protection and operational efficiency in residential, commercial, and industrial setups. Substandard or worn-out parts can compromise the entire circuit protection system, increasing the risk of downtime, equipment damage, and safety hazards. That's why it's crucial to choose MCB parts that meet strict industry standards for performance and longevity. Our MCB parts are designed for easy compatibility, enabling smooth integration into various breaker models and electrical configurations.

By investing in dependable components, you're not just improving functionality—you're ensuring peace of mind, knowing your electrical infrastructure is safeguarded by parts that deliver consistent protection, minimal maintenance, and maximum reliability.



## | Type of Products



# Arc Chute Assembly

**Precision Arc Control  
for Enhanced Circuit  
Protection**

The Arc Chute Assy is a vital component of circuit breakers, designed to safely extinguish electrical arcs generated during circuit interruption. Built with high-quality insulating materials and engineered for precision arc quenching, it minimizes contact damage, improves safety, and extends the life of your electrical equipment.

### Key Features:

- **Efficient Arc Quenching Design**
- **Made from High-Grade Insulating Materials**
- **Minimizes Contact Erosion and Equipment Wear**
- **Reduces Risk of Electrical Faults**
- **Compatible with Various Circuit Breaker Models**

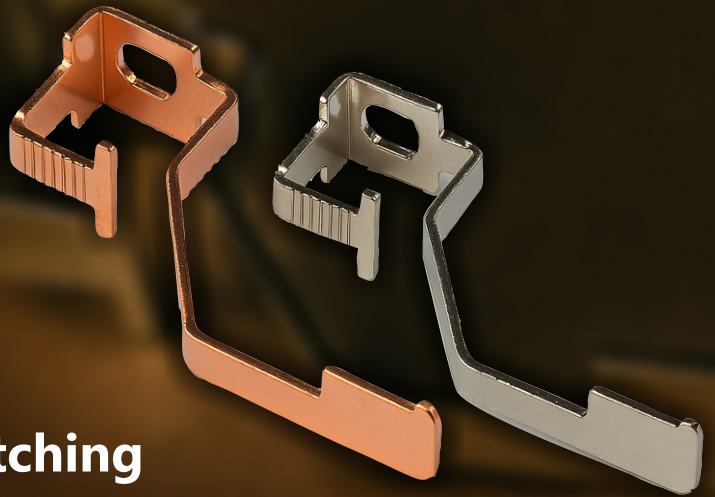
We offer high-performance Arc Chute Assemblies that are manufactured to meet stringent quality and safety standards. With a focus on precision engineering, durability, and compatibility, our products provide superior arc control, reduce downtime, and help lower maintenance costs. Trusted by professionals across industries, our Arc Chute Assy is the reliable choice for safety, longevity, and seamless system performance.



Arc Runner Contacts are widely used in circuit breakers, switchgear assemblies, power distribution panels, industrial machinery, and electrical control systems.

# Arc Runner Contact

Engineered for  
High-Performance Arc Switching



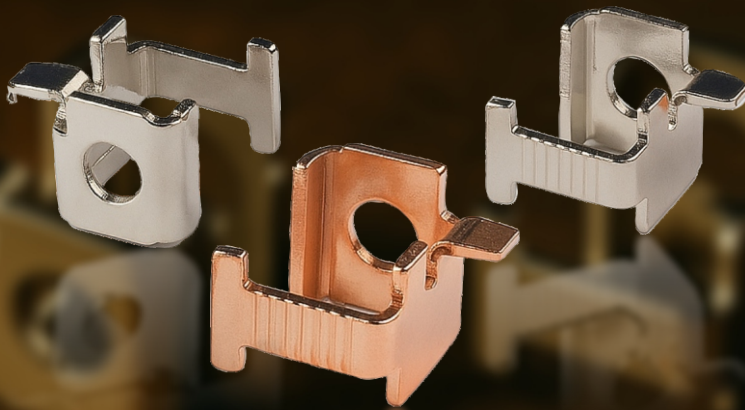
The Arc Runner Contact is a high-performance electrical contact specifically designed for demanding arc-switching environments. Manufactured with advanced materials and precision construction, it ensures excellent conductivity, minimal wear, and superior arc-quenching capabilities.

## Key Features:

- **Superior Arc-Quenching Properties**
- **High Thermal & Electrical Conductivity**
- **Resistant to High Voltage and Current Stress**
- **Precision-Engineered for Long Life**
- **Minimal Wear & Excellent Contact Stability**

We offer premium-grade Arc Runner Contacts that are designed for long-lasting durability and exceptional performance. Our contacts are built to meet and exceed industry standards, delivering precision, conductivity, and safety even under extreme electrical loads. With a commitment to quality materials, engineering expertise, and application support, we provide dependable solutions that ensure efficient operation and reduced maintenance in critical electrical systems.

Box Clamps are widely used across packaging units, warehouse operations, logistics handling, material transport systems, and automotive assembly lines.



# Box Clamp

- **Secure Grip**
- **Industrial Strength**
- **Maximum Efficiency**

The Box Clamp is a versatile and heavy-duty clamping tool designed for safely securing boxes, containers, and materials during manufacturing, assembly, or transport processes. Engineered with robust construction and ergonomic design, it ensures strong grip, stability, and ease of use.

## Key Features:

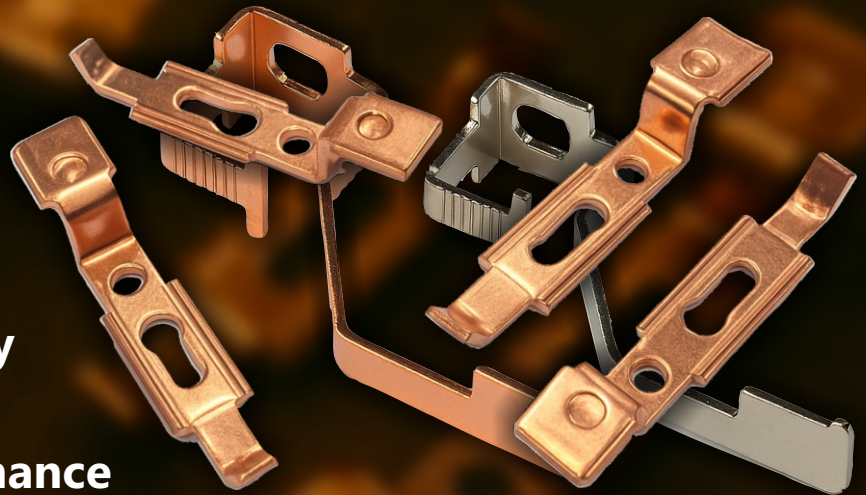
- **Strong, Non-Slip Grip**
- **Heavy-Duty & Durable Design**
- **Easy to Operate & Maintain**
- **Reduces Product Damage During Handling**
- **Enhances Productivity & Safety**

We provide high-performance Box Clamps that combine strength, ease of use, and reliability to meet the demands of today's fast-paced industrial environments. Our products are crafted from premium materials and designed for maximum uptime and safety, ensuring consistent results in challenging conditions. Backed by responsive support and a reputation for quality and innovation.

Moving Contacts are widely used in electrical switches, electromagnetic relays, contactors, circuit breakers, and other motion-based electrical systems.

# Moving Contact

- Precision Connectivity
- Smooth Operation
- Long-Lasting Performance



The Moving Contact is a high-quality electrical component engineered for efficient and reliable performance in dynamic electrical applications. Designed to ensure smooth, stable, and low-resistance connections, it is ideal for systems involving frequent movement, such as switches, relays, and control mechanisms.

## Key Features:

- Smooth & Reliable Electrical Connection
- High Durability Against Continuous Motion
- Precision-Engineered for Minimal Wear
- Consistent Conductivity Over Time
- Suitable for High-Cycle Electrical Applications

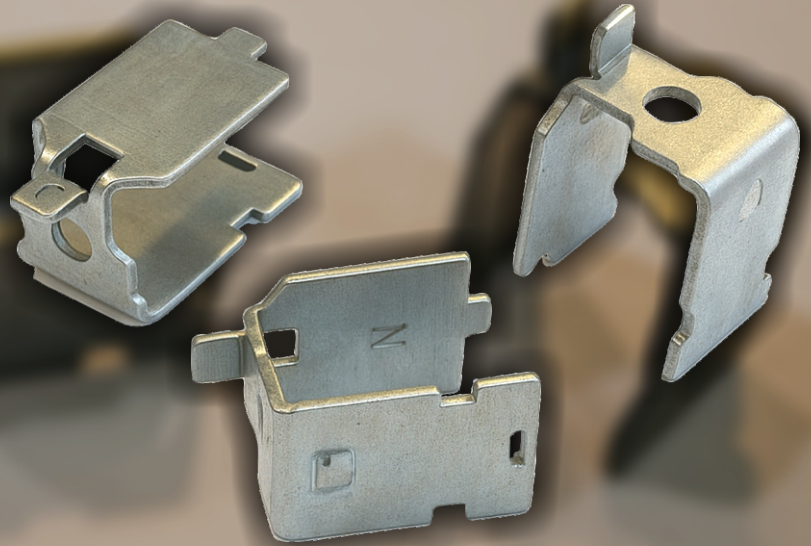
Our Moving Contacts are manufactured using premium-grade materials and cutting-edge production techniques, ensuring flawless performance under repetitive operation. We focus on delivering components that meet industry standards for electrical conductivity, wear resistance, and mechanical strength. With a commitment to quality, innovation, and customer satisfaction, we provide dependable solutions that enhance equipment reliability and operational efficiency.



U Clamps are used extensively in plumbing systems, cable management, vehicle exhaust mounts, industrial piping setups, and electrical conduit supports.

# U Clamp

- **Secure Fastening**
- **Corrosion Resistant**
- **Built to Last**



U Clamps are durable and versatile fastening components designed to secure pipes, cables, and tubing across a wide range of industries, including plumbing, electrical, and automotive. Manufactured from high-quality stainless steel, these clamps offer excellent corrosion resistance, long-term strength, and reliable support for both indoor and outdoor use. Easy to install and available in various sizes, U Clamps are ideal for both professional installations

## Key Features:

- **Made from Premium Stainless Steel**
- **High Corrosion & Rust Resistance**
- **Strong, Vibration-Resistant Grip**
- **Easy to Install & Reuse**
- **Available in a Wide Range of Sizes**

Our U Clamps are engineered to deliver reliable performance, easy handling, and long-lasting durability in even the toughest conditions. With a variety of sizes, superior material quality, and a commitment to manufacturing excellence, we provide fastening solutions that meet the needs of professionals and industries alike. Choose us for products that combine functionality, safety, and value—built to hold strong when it matters most.



Arc Runners are widely used across sectors such as manufacturing, construction, logistics, and automation.



# Arc Runner

## Engineered for Precision Built for Endurance

The Arc Runner is a precision-engineered, high-performance component built to deliver consistent and smooth motion in demanding industrial environments. Designed for rugged use and continuous operation, this equipment enhances productivity and efficiency while minimizing operational disruptions.

### Key Features:

- Precision-engineered for **smooth** and **reliable motion**
- Built with **wear-resistant, high-strength materials**
- Reduces **friction** and **operational fatigue**
- Ideal for continuous, **heavy-duty applications**
- Low-maintenance design with **extended service life**

We offer Arc Runners crafted with attention to every detail—combining durability, accuracy, and advanced material science to ensure peak performance. Backed by a legacy of engineering expertise and strict quality control, our products are trusted by industries nationwide. When you choose us, you benefit from technical support, custom-fit solutions, and dependable delivery.

# HARDWARE & FASTENERS

Our Hardware & Fasteners are engineered to deliver strength, precision, and reliability across a broad spectrum of industries and applications. From construction sites to assembly lines, every fastener we offer is manufactured to meet stringent industry standards, ensuring optimal performance even in the most demanding environments. Our product range includes a comprehensive selection of screws, bolts, nuts, washers, anchors, and more—each crafted from high-grade materials such as stainless steel, carbon steel, brass, and alloy composites. These materials are chosen not only for their durability but also for their resistance to corrosion, temperature fluctuations, and mechanical stress, making our fasteners suitable for long-term use in challenging conditions.



## Hardware & Fasteners That Hold Strong.

Whether you're managing large-scale infrastructure projects, precision manufacturing tasks, or home improvement installations, our Hardware & Fasteners provide the dependable connection you need. With both standard and custom options available, we cater to the unique needs of industries such as automotive, construction, aerospace, electronics, and DIY.

Each item is designed for easy handling and accurate fitment, streamlining the assembly process and minimizing downtime. Our commitment to customer satisfaction extends beyond product supply—we aim to be your trusted partner by offering fast delivery, technical support, and tailored fastening solutions. With our Hardware & Fasteners, you can be confident in achieving secure, efficient, and long-lasting assembly—every time.

## | Type of Products

Box Clamps are essential industrial tools engineered to securely grip and stabilize boxes, containers, and materials during handling, transportation, and storage. Built for heavy-duty performance, these clamps ensure safe, efficient, and damage-free operations. Made from premium-grade materials, our Box Clamps deliver exceptional strength, reliability, and long service life, making them indispensable in demanding work environments such as warehouses, logistics centers, and manufacturing units.

### Key Features:

- **Heavy-duty construction** for high-load capacity
- **Excellent grip** and **stability** during movement
- **Corrosion-resistant material** for long-term use
- **Low maintenance** and **high durability**
- **Designed to fit various box sizes and shapes**

We provide top-grade Box Clamps that are precision-engineered to meet the demands of modern industrial handling. Our clamps combine strength, functionality, and ease of use to deliver superior performance in high-pressure environments. Backed by rigorous quality checks and industry expertise, our Box Clamps ensure reliability, reduce downtime, and help streamline your workflow

# Box Clamp

## Engineered for Secure & Reliable Connections





Forged Pins and Clips are ideal for use in substations, industrial plants, power grids, and smart energy systems, as well as in automotive, construction, agriculture, and heavy machinery industries. They offer reliable performance across diverse applications requiring strength, durability, and secure connections.

## ➤ Clips

Secure. Simple. Strong

## ➤ Forged Pins

Engineered for Strength  
Forged for Reliability



Forged Pins and Clips are high-performance fastening components designed for strength, precision, and versatility. Forged Pins offer exceptional durability and resistance to impact, fatigue, and deformation, making them ideal for high-stress industrial applications. Clips provide a strong grip and reliable performance across a wide range of uses—from everyday organization to demanding mechanical setups—available in various sizes, shapes, and materials to suit diverse needs.

### Key Features:

- Available in multiple materials (**plastic, metal, stainless steel**)
- Strong holding power and **secure fastening**
- Manufactured using **high-grade forging processes**
- Excellent tensile **strength** and **impact resistance**

We offer a wide range of precision-forged pins and high-quality clips that deliver strength, reliability, and ease of use. Manufactured to exceed industry standards, our products undergo strict quality checks to ensure consistent performance across applications. With custom options, fast delivery, and strong customer support, we provide dependable and cost-effective fastening solutions tailored to your needs.

The Nut-87530, washers, weld nuts, and head nuts are widely used across industries like automotive, construction, manufacturing, heavy machinery, metal fabrication, plumbing, and electrical assemblies. They play a vital role in systems ranging from equipment assembly to structural frameworks and industrial machinery.

- **Nut-87530**
- **Washers**
- **Weld Nuts & Head Nuts**



Weld Nuts, Head Nuts, Nut-87530, and Washers are critical fasteners used across industrial applications for secure, long-lasting connections. Designed to handle high stress, vibration, and temperature, they ensure durability and performance. While weld and head nuts offer strong anchoring and load distribution, washers enhance joint stability by reducing wear and preventing leaks—making them essential in demanding environments.

#### Key Features:

- **Manufactured from high-strength, corrosion-resistant materials**
- **Distributes load evenly to prevent fastener damage**
- **Strong Permanent Fixation: Weld Nuts offer a secure weldable surface for structural reliability.**

We offer more than just fastening components we deliver reliable, high-quality solutions. Our Nut-87530, washers, weld nuts, and head nuts are manufactured to stringent standards, ensuring durability, precision, and performance. Backed by technical support, consistent availability, and a wide product range, we meet diverse industry needs with trusted, cost-effective fastening solutions.

# ELECTRICAL

Electrical systems play a fundamental role in shaping modern infrastructure by delivering seamless and uninterrupted power to residential, commercial, and industrial environments. They serve as the foundation for operating essential equipment such as lighting systems, appliances, HVAC units, and heavy machinery. Proper design, installation, and integration of electrical components are critical to ensuring safety, reliability, and performance. From structured cabling and switchgear to distribution boards and protective devices, every element in an electrical setup contributes to the efficient functioning of an entire facility. Regular maintenance, inspections, and compliance with safety standards are essential to avoid hazards such as short circuits, electrical fires, and system failures—thereby prolonging the life of both the infrastructure and connected equipment.



## Empowering You with Intelligent Energy Solutions

With the rapid evolution of technology, the electrical industry is witnessing a shift towards smarter, more sustainable solutions. Modern systems now incorporate energy-efficient components, automated controls, and IoT-enabled devices to optimize power consumption and reduce operational costs. Innovations such as smart meters, solar energy integration, motion-sensor lighting, and energy management systems are transforming the way energy is monitored and utilized.

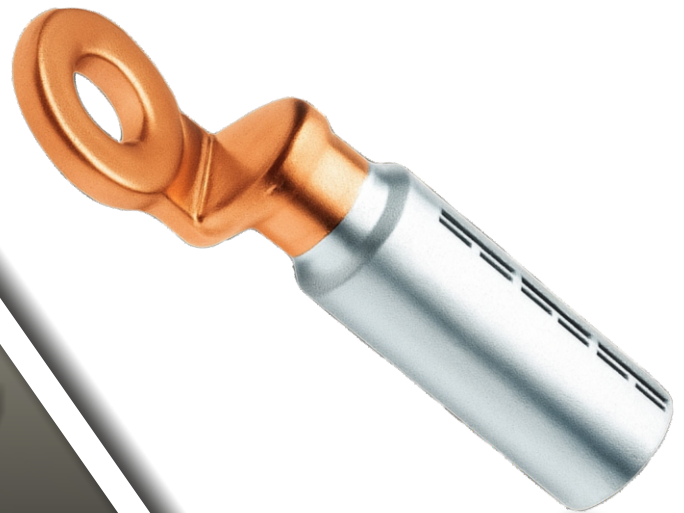
These advancements not only improve efficiency but also support environmental goals by minimizing carbon footprints. Whether you're upgrading an existing facility or designing a new one, investing in advanced electrical systems ensures scalability, sustainability, and enhanced performance for years to come.



## | Type of Products

# Lugs

**Reliable Electrical Connectivity  
for Enhanced Safety and  
Performance**



Lugs are vital components in any electrical system, offering a secure and stable method for connecting wires to terminals, busbars, switchgear, and other electrical equipment. Engineered for optimal conductivity and mechanical strength, our range of lugs is designed to reduce energy loss, enhance safety, and ensure long-lasting electrical connections.

### Key Features:

- **Excellent electrical conductivity**
- **Corrosion-resistant materials (copper, aluminum, etc.)**
- **Heat and vibration-resistant design**
- **Easy installation with strong crimping hold**
- **Available in multiple sizes and specifications**

We offer premium-quality lugs that meet international standards for safety and performance. Our products undergo stringent quality checks to ensure optimal durability and conductivity. With a wide inventory of lug types, sizes, and finishes, we cater to all kinds of wiring needs—whether standard or customized.

Mechanical connectors are widely used in power distribution networks, grounding systems, panel boards, transformers, and heavy industrial equipment.



# Mechanical Connectors

**Tool-Free Strength, Precision Performance**

Mechanical Connectors are essential components used to establish strong, secure, and low-resistance electrical or mechanical connections without the need for soldering or welding. Built for durability and simplicity, they are designed to deliver maximum conductivity, mechanical strength, and long-term reliability. Available in various configurations such as bolted, compression, and clamp-style designs.

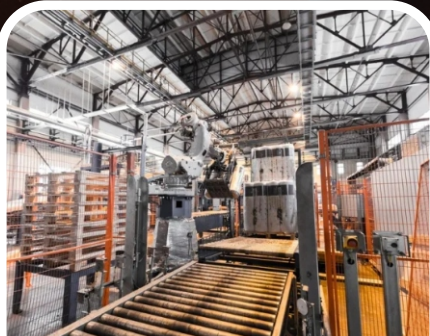
## Key Features:

- **No soldering or welding required**
- **High conductivity and mechanical strength**
- **Corrosion-resistant materials**
- **Quick and easy installation**
- **Suitable for a range of wire sizes and types**

We deliver mechanical connectors engineered to meet international standards for quality, safety, and performance. With a wide range of types and sizes in stock, our connectors provide reliable solutions for even the most complex requirements. Whether you're handling high-voltage setups or industrial automation systems, our precision-built products and expert support ensure you get the perfect fit—on time and every time.



# INDUSTRIES SERVED



**Transformer  
Manufacturers**



**MCB mfg**



**Switchgear  
Manufacturers**



**EV Station**



**Tractor mfg**



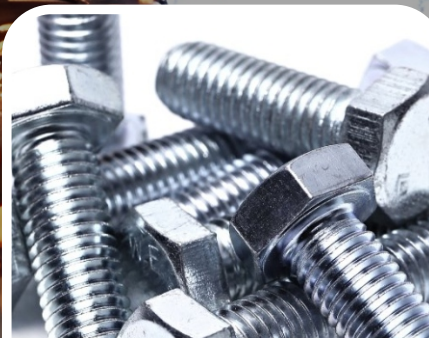
**Automotive  
Industry**



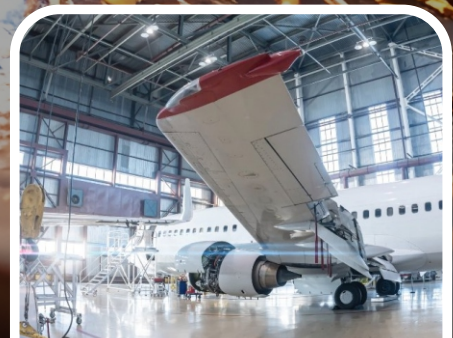
**Energy Sector**



**Oil and  
Gas Industry**

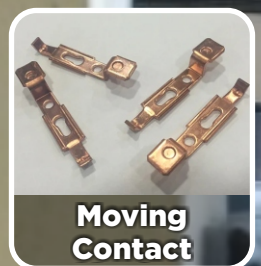


**Fasteners**



**Aerospace and  
Defense Industry**

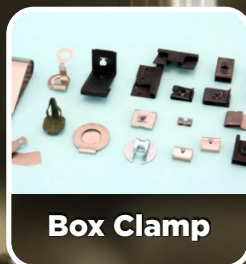




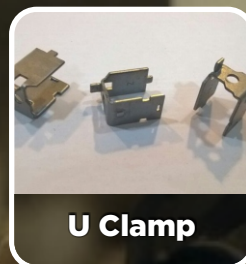
**Moving Contact**



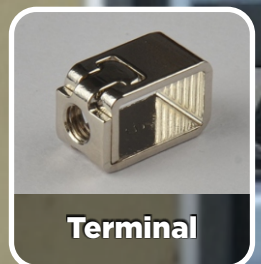
**Brass Pins**



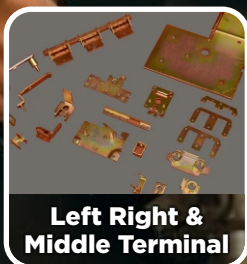
**Box Clamp**



**U Clamp**



**Terminal**



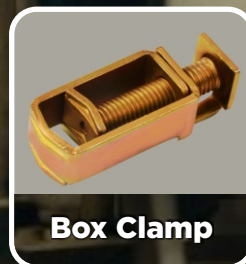
**Left Right & Middle Terminal**



**Nut87530**



**Weld Nuts & Head Nuts**



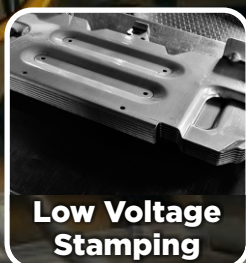
**Box Clamp**



**Brackets**



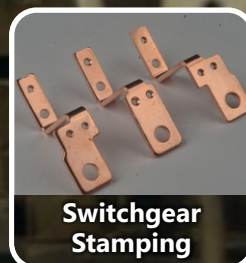
**Washers**



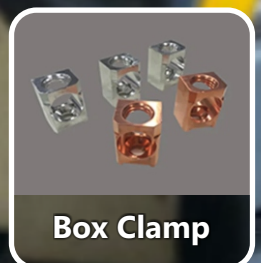
**Low Voltage Stamping**



**Side Panels**



**Switchgear Stamping**



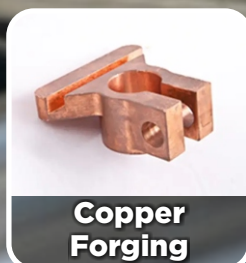
**Box Clamp**



**Aluminium Stamping**



**Copper Forged & Machined**



**Copper Forging**

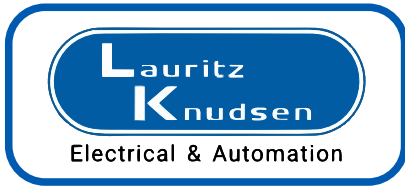


**Industrial Battery Terminals Stalcorp**



**MCCB Contacts**

# Clients







## Contact Us :



[enquiry@bendyproducts.com](mailto:enquiry@bendyproducts.com)



1438/B & 191-1, GIDC, Waghodia  
Dist. : Vadodara - 391760 Gujarat, India



To View Website  
Please Scan QR Code





<https://bendyproducts.com/ecatalogue>